

# Information Delivery and Licensing of GSNI and Tellus Data

Mark Patton  
Tellus Project Data Manager

**TELLUS**



**Geological Survey  
of Northern Ireland**

# Outline

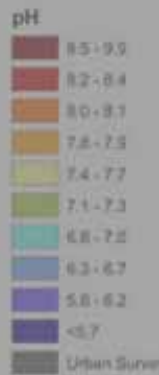
- Overview of data available from GSNI
- Overview of formats and delivery mechanisms
- Information on licensing

# 1. Available Data

- Tellus project data
- GSNI data
- Additional datasets

# Tellus Geochemistry

- Soil
  - Shallow soil: 52 analytes by X-Ray Fluorescence (XRF), pH and Loss On Ignition
  - Deep soil: Platinum group and gold by fire assay
- Sediment
  - 39 analytes by XRF and fire assay
- Water
  - 41 analytes by ion chromatography and Inductively Coupled Plasma (ICP)





# Tellus Geophysics

- Total Magnetic Intensity
  - sampled at 0.1 second intervals
- Electromagnetics - including in-phase, out-of phase, apparent conductivity and depth inversion for two frequencies
  - sampled at 0.25 second intervals
- Radiometrics – total count and potassium, equivalent uranium and equivalent thorium
  - sampled every second

**TELLUS**

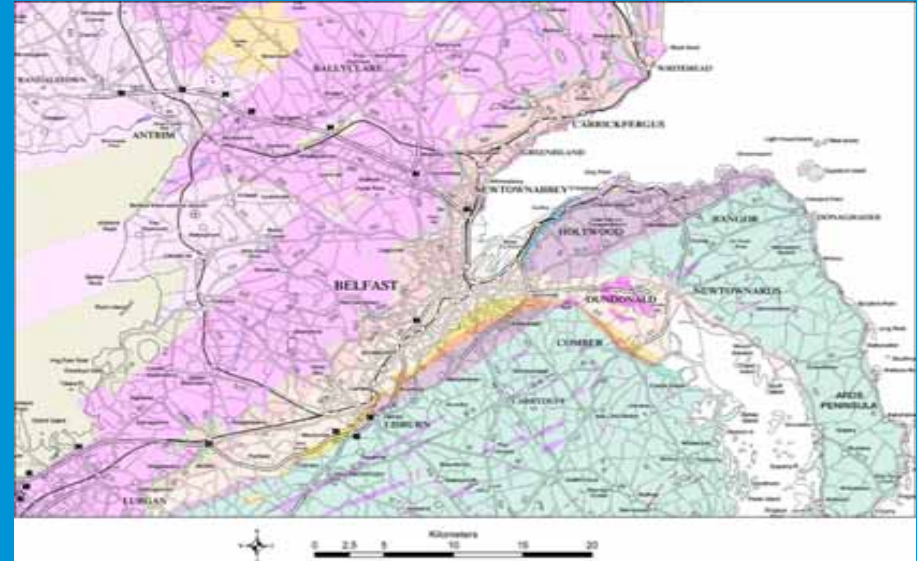


Department of  
Enterprise, Trade  
and Investment  
[www.deti.ni.gov.uk](http://www.deti.ni.gov.uk)

**Geological Survey  
of Northern Ireland**

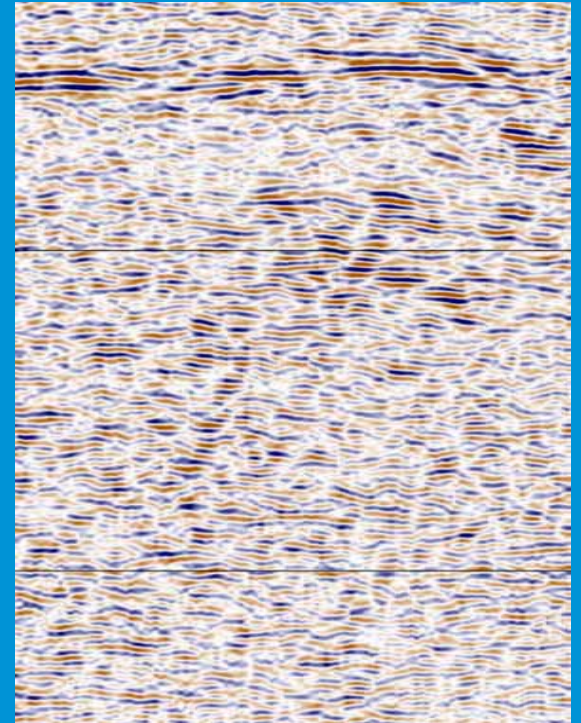
# GSNI Non Tellus Data

- Digital geology
  - 1:250,000
  - 1:50,000
- Borehole database
  - ~25,000 borehole logs
  - ~2,500 site investigation reports
- Regional gravity and magnetics



# GSNI Non Tellus Data

- Exploration data
  - Minerals
  - Hydrocarbons
- Abandoned mines
  - >2,000 shafts and adits
  - Mine abandonment plans





# Additional datasets

- Ordnance Survey Data
  - Topographic Base-map
  - Orthophotographs
  - High resolution Digital Terrain Model

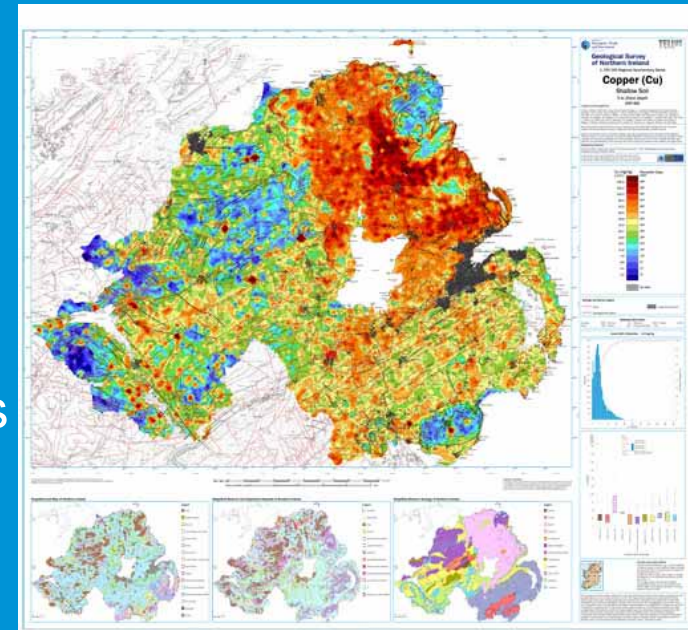


## 2. Formats and Delivery

- Tellus Geochemistry data
- Tellus Geophysics data
- GSNI data

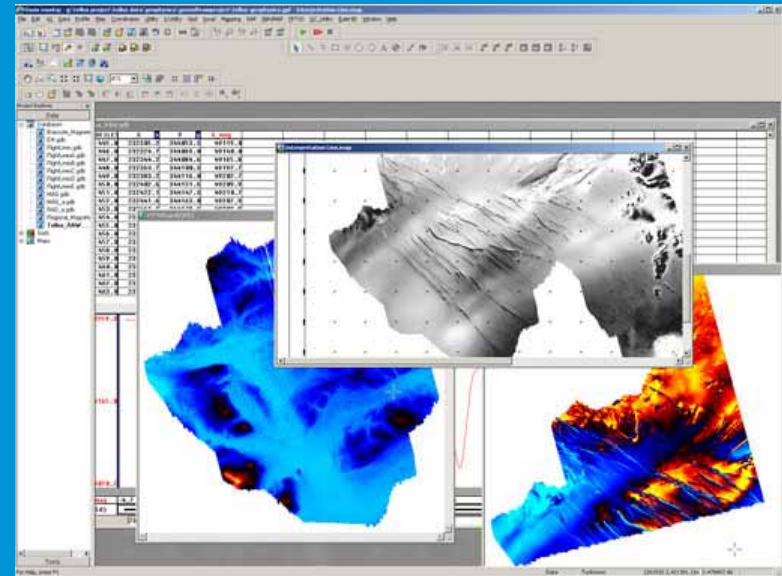
# Geochemistry data formats

- Excel worksheet or ASCII text file
- ArcGIS shape files
- 1:250,000 scale maps
  - 20 elements from each of the surveys



# Geophysics data formats

- Data available as Oasis Montaj grids or ASCII line data
  - Area extracts or full data sets
- Commonly used transforms
- 1:250,000 scale maps
  - Selected grids and transforms



# GSNI data formats

- Digital data
  - ArcGIS shape file
  - Bentley design file (dgn)
  - Access Database – Excel or text file





# 3. Licensing

- Basic structure
- Costing examples

# Tellus Data

- Licensing based on
  - Volume of data
    - Geochemistry – per sample
    - Geophysics – line km or km<sup>2</sup> for grid data
  - Preparation charge
  - Annual administration charge

**TELLUS**

# Tellus Data

- Volume discounts start at
  - > 1,000 geochemistry points
  - > 10,000 line km's of geophysics
  - > 2,000 km<sup>2</sup> of geophysics grid data
  - Up to a maximum discount of 50%
- This applies to the first license – an additional 9 users would cost just one additional Annual License Fee

**TELLUS**

# Example 1

1 x 1:50,000 sheet = 1,200 km<sup>2</sup>

Tellus shallow soil geochemistry, sediment and water  
for that area would total £2,020

All the geophysics covering the same area would total  
£2,700

(plus annual license fee, administration charge and VAT  
where applicable)

**TELLUS**



**Geological Survey  
of Northern Ireland**



# GSNI Data

- Digital map data available under license
- 3 components to the charge
  - Usage
  - Administration
  - Preparation
- Total fee = usage + administration + preparation (+ VAT)

# Example 2

- 1 x 1:50,000 sheet of GSNI digital data
  - usage + administration + preparation = £392 for 1 user for one year
  - One user for 5 years = £760

# Summary

- Data available
- Data formats and delivery
- Data licensing

[http://www.bgs.ac.uk/gsni/tellus/data\\_licensing/index.html](http://www.bgs.ac.uk/gsni/tellus/data_licensing/index.html)

**TELLUS**



**Geological Survey  
of Northern Ireland**

